

# Promote UP Quarterly Newsletter

It's only been two months since the official start date of the Promote UP project, but we're happy to report it's felt longer thanks to how much progress we've made towards getting this study ready for Spring 2023 enrollment. We want to thank each and every one of our partners for your contributions as we work towards making this project a success.

## General Study Updates

### Stakeholder Advisory Committee

- First full Stakeholder Advisory Committee meeting held in May

### IRB Approval

- IRB approval has been received from the University of Florida
- The investigative team will be working on developing the process evaluation interview scripts and protocol over the summer

### App Development

- iCanQuit + Motiv8 is in the final round of design
- iCanQuit and iCanQuit + Motiv8 copy, images and audio have been translated into Spanish

June 2022 Edition

## Upcoming Events & Milestones

iCanQuit + Motiv8 App Demo  
TBD - Late July 2022

Fall SAC Meeting  
October 27 | 12 - 1 p.m.  
Zoom & UF CTRB

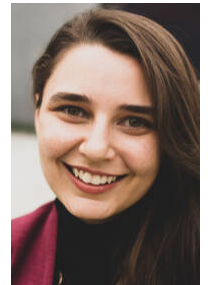
Submit Project Recruitment,  
Data Safety and Monitoring, &  
Engagement Plans  
September 2022

## Meet the Study Team

**Alexandra Fahnlander**  
Research Coordinator, UF

Alex has been at UF since 2019 and will be assisting the study team as a research coordinator. As someone with firsthand experience growing up around people who smoke, she's very passionate about the potential of mHealth cessation aids to provide accessible therapies to a wide net of patients.

Alex will be helping to coordinate stakeholder engagement, drafting communications, and preparing project updates for PCORI.



## Patient & Community Group Member Spotlight



**Shirley Bloodworth**  
Citizen Scientist, OneFlorida+

Shirley has lived in Gainesville, Florida since 1951, eventually receiving a master's degree in Psychiatric Nursing from UF. She went on to serve in the UF College of Nursing in an adjunct position as Nursing Director of the Shand's/UF Clinical Research Center until retiring in 1980. She then went on to provide Alzheimer's Disease education and develop advanced care planning seminars and end-of-life education programs with Haven Hospice for 11 years before retiring a second time.

Shirley is active in the community and became a OneFlorida+ Citizen Scientist in 2015. She loves staying abreast of new and cutting-edge developments in science, medicine, and community engagement efforts. As a former person who smoked, she is excited to provide advice and support as a member of the Patient and Community User Group.